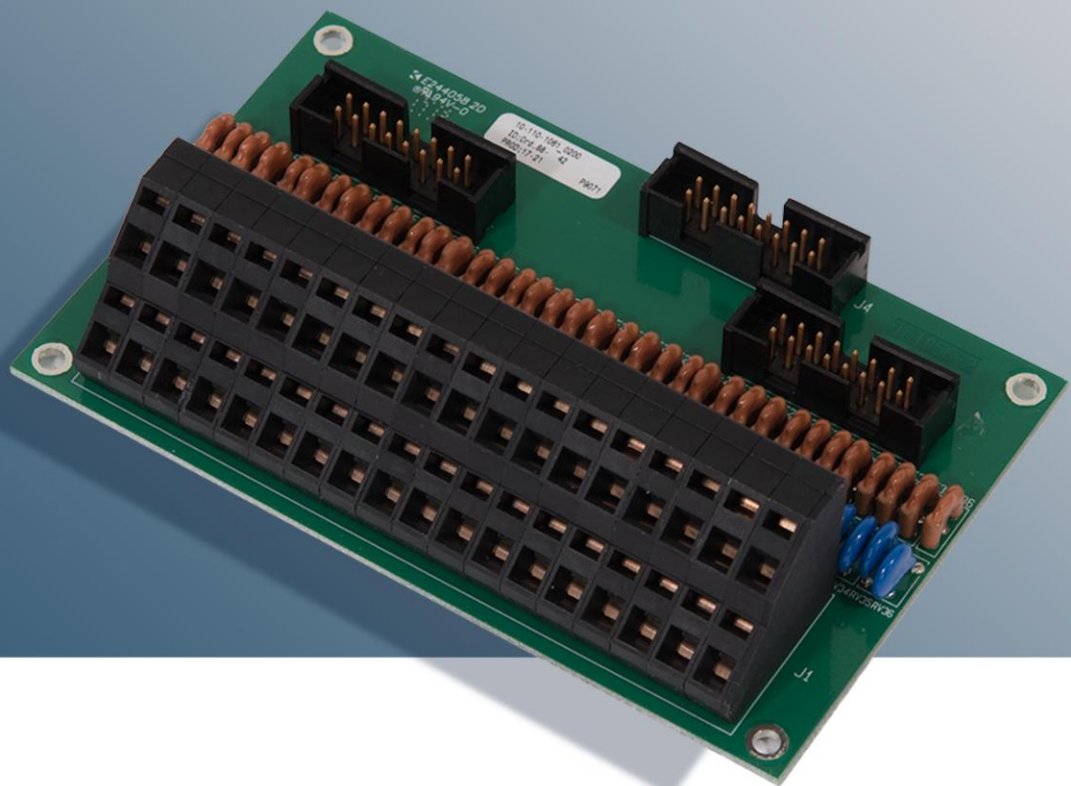


# CTU2

## Cable Termination Unit



18 line Cable Termination Unit: 16 extensions + 2 trunk lines.

## Description and use

The CTU2 is used for terminating the ship cables. It takes up to 1.5mm<sup>2</sup> wires. It uses constant force spring-loaded screw less connection block for connecting ship cables. This ensures for long lifetime without screws loosening from vibration

The CTU2 terminates 18 pairs of wires, and the layout is 2 times 8 lines plus 2 lines. This gives the possibility of terminating 16 extension lines and 2 trunk lines on one single CTU2 unit. The CTU connects to AEXT16 and FIO4 using easy customized ribbon cables.

The CTU2 is the EMC barrier of the systems, taking care of incoming over voltages and transients that might be introduced in the cabling by other equipment on board. To be able to actually have this function, the CTU2 must be placed on the cabinet with good reference to ships hull.

The CTU2 is mounted using 4 pcs of 3x6mm screws. These are not included when ordering.

When using the CTU2 for customized designs, the CTU2 shall be mounted on 5mm high standoffs on a conducting material connected to ships hull.

## Technical data

- Terminating 18 pairs: 2 x 8 + 2
- 1,5mm<sup>2</sup> max
- Max current 1A
- Screwless termination of ship cables

## Order information

10-110-1061

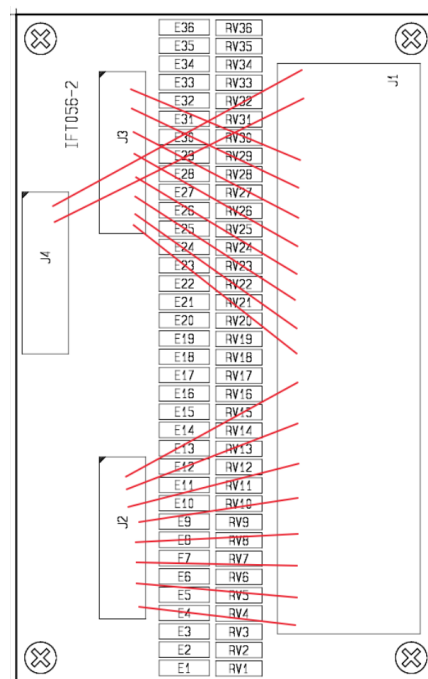
## Connectors

J1 is the connector for ship cables. This connector has 2x18 terminations.

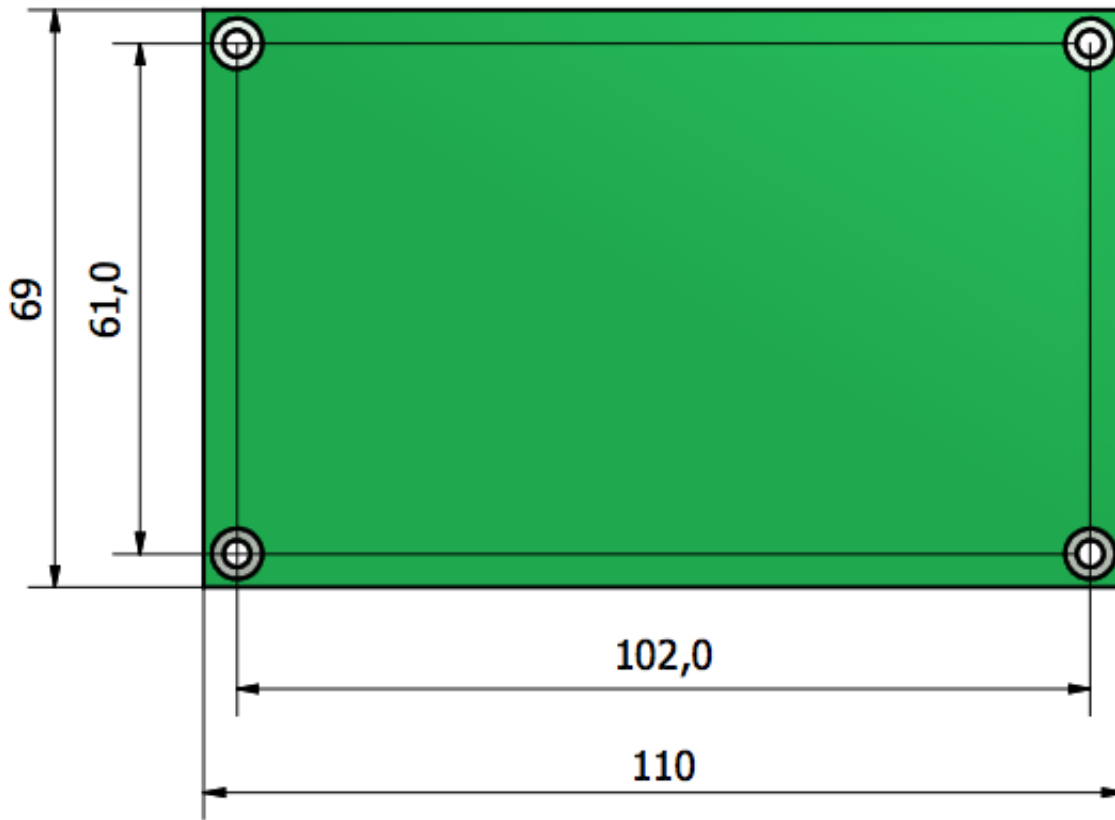
J2 and J3 are the ribbon cable connectors each taking 2x8 wires the to AEXT16 and FIO4 boards via ribbon cables

J4 is a 2x8 wire ribbon cable connector, but only two pairs from this connector are taken to J1. This is arranged so that 2 trunk lines from an FIO2 or FIO4 can be terminated using this connector.

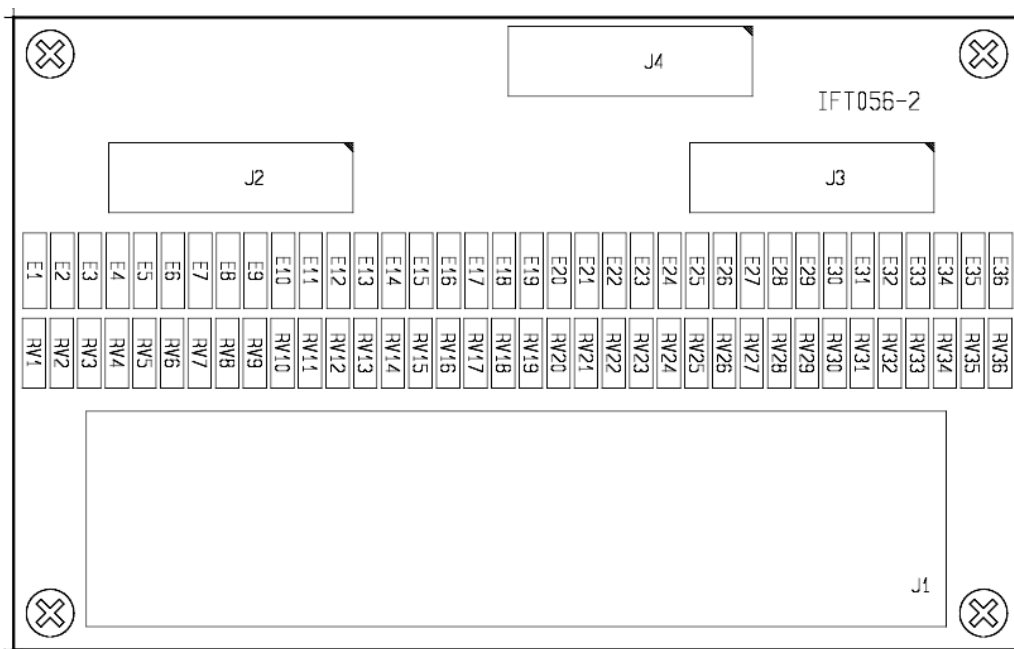
The way the CTU2 is arranged is shown in below figure



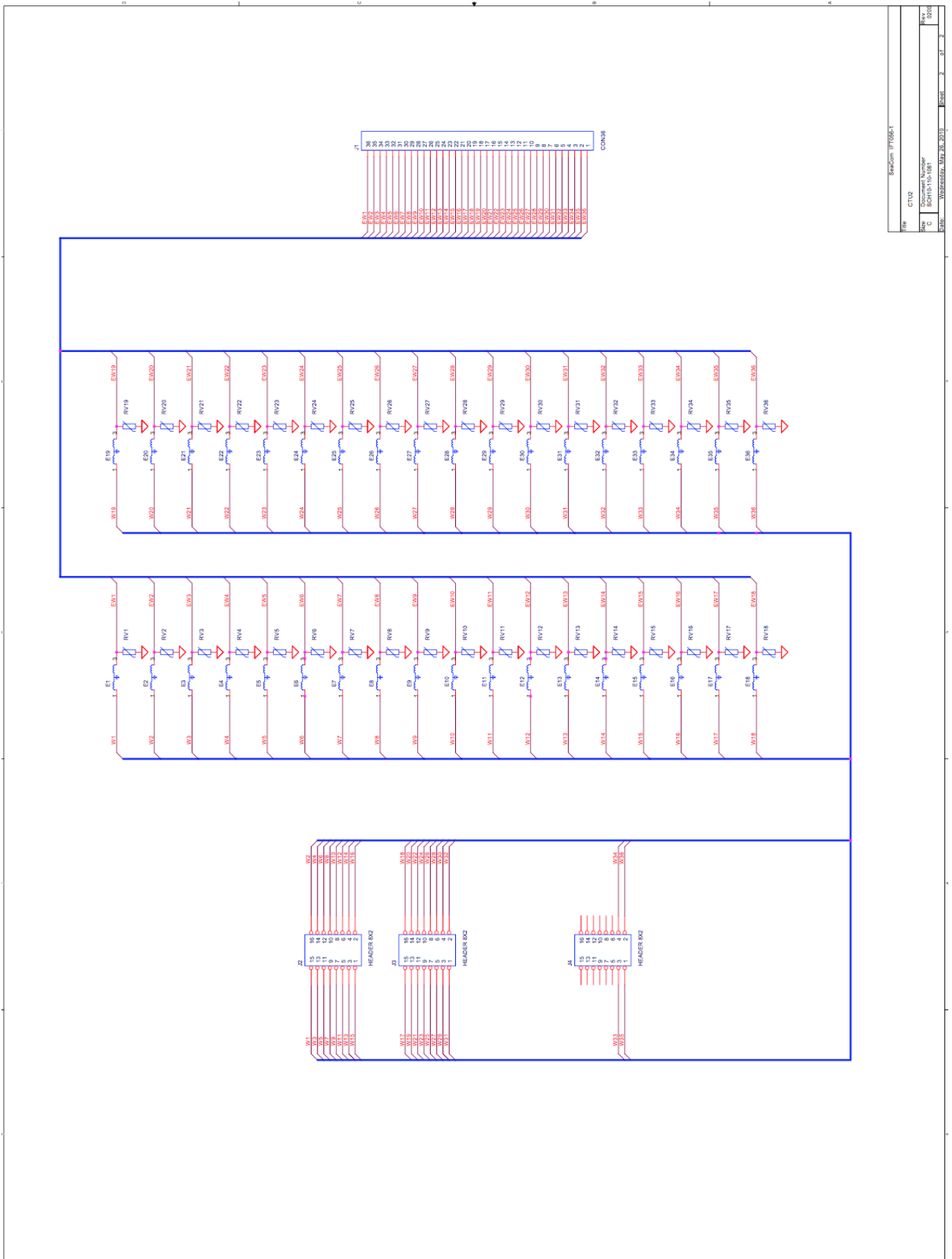
## Mechanical dimensions



## PCB layout



# Schematic



File	CTU2
Doc	Document Number
Rev	Rev
DATE	DATE